

# TOP END MOTOCROSS CLUB

## 2009 Member Information

Phone: Club Info Line: 0406 959 914

Website: [www.topendmotox.org.au](http://www.topendmotox.org.au)

Email: [info@topendmotox.org.au](mailto:info@topendmotox.org.au)

### Eligibility Criteria

To be eligible to compete/race at club events, riders must have obtained the following:

#### Membership

Be a financial member of Top End Moto Cross Club Inc. Membership is valid for a calendar year (ie. January to December of the current year). Membership entitles the rider (single or family) to a key and the use of the track for practise at any time (with the exception of track closure times – see Track Times below). A membership form is available on our website or you can complete one at next race meeting. You may send the completed form with relevant fee to PO Box 1704, Palmerston, 0831.

- **Single Membership** – eligible to riders who are 18 years of age and over and are single with no dependents/spouses.
- **Family Membership** – eligible to families (includes 'family unit' ie. Immediate family living in the same dwelling).

By becoming a financial member of the Top End Moto Cross Club Inc you agree to abide by all Club Rules (below) at all times

1. No Helmet = No Ride (Helmets must be strictly worn at all times whilst riding any motorbike)
2. All Riders ride at their own risk
3. Track open to Current financial members of Top End Moto Cross Club Inc. only
4. Tracks to be ridden in the correct direction only
5. Mini bikes (bikes with maximum wheel sizes of 12" rear and 14" front) only to be ridden on Mini bike track
6. Walking pace Speed limit for Bikes and vehicles in Pit area at all times
7. All riders must be accompanied whilst riding on Club Tracks
8. No Quads to be ridden at Club except by official invitation from the committee
9. No Bikes in spectator areas
10. No swimming in water storage Dam

#### Track Times

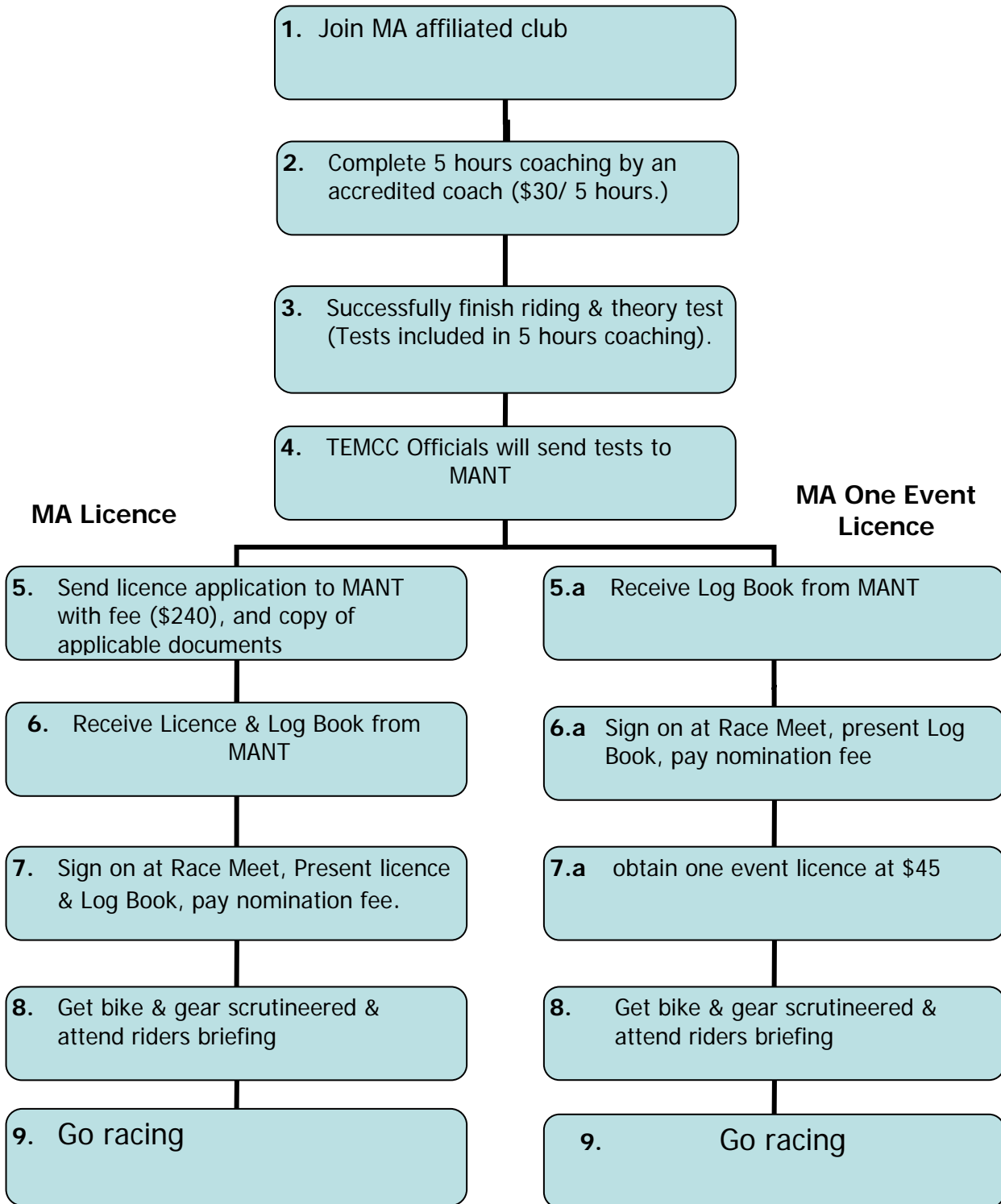
The track is available to **Club members only** for practise from 7.00am to 6.00pm every day with the exception of track closure times. The track is closed at specified times for maintenance from:

- Friday Sunset if the race meeting is held on the following Saturday;
- Wednesday 6.00pm if the race meeting is held on the following Sunday; or
- Any other time when there is a 'Track Closed' sign on the gate.

## Licence

To compete at club events, all riders must obtain a Motorcycling Australia (MA) licence or (MA) one event licence.

### MA Licence - Juniors 7- Under 16 years



## **MA Licence – Juniors 7 - Under 16 years**

To compete at club events, all junior riders must obtain a Motorcycling Australia (MA) licence.

1. Join an MA Affiliated Club
2. Take part in 5 hours coaching, riding & theory test. Maximum cost \$30 / 5 hours. Contact an official of the TEMCC to receive a list of accredited coaches.
3. Successfully complete the 5 hours coaching and the included riding test and theory test (included in Kickstart booklet).
4. TEMCC will send test results to MANT.
5. Contact the Secretary of the TEMCC to receive a Licence application form. The completed Licence application form together with 2 passport photos, License fee \$240 (per year from date of issue) Copy of Birth Certificate & Proof of Ambulance Cover will need to be forwarded to Motorcycling Australia Northern Territory (MANT), See form for details. Allow 2weeks for this to be processed.
6. You will receive your MA licence, log book and Manual of Motorcycle Sport from MANT.
7. Sign on at Race Meeting and pay your nomination fee. Present your Licence & Log Book.
8. Get your bike and gear scrutineered and attend rider's briefing. (See page 9 for details).
9. Go Racing.

## **MA One Event Licence - Juniors 7 - Under 16 years**

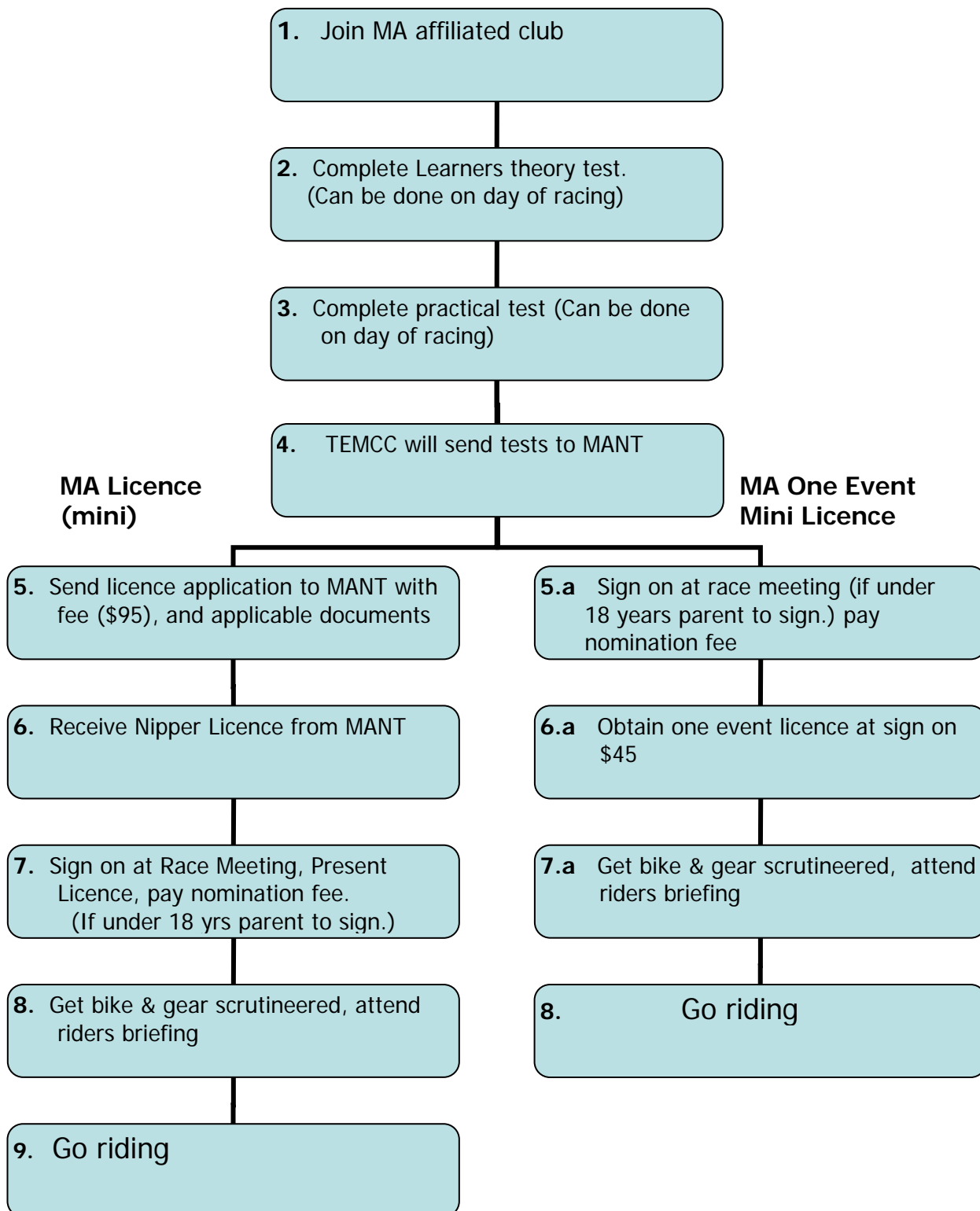
If you do not wish to obtain an official Licence but wish to race at selected events, you may obtain a MA One Event Licence which entitles you to race for that day only.

1. Join an MA Affiliated Club
2. Take part in 5 hours coaching, riding & theory test. Maximum cost \$30 / 5 hours. Contact an official of the TEMCC to receive a list of accredited coaches.
3. Successfully complete the 5 hours coaching and the included riding test and theory test (included in Kickstart booklet).
4. TEMCC will send test results to (MANT).
- 5.a You will receive a log book from MANT and your details will be kept on a membership/licencing database. Once you receive your log book you will be eligible to purchase a One Event Licence.
- 6.a Sign on at race meeting, pay your nomination fee and present your log book.
- 7.a Obtain a One event Licence (\$45) at sign on. Which entitles you to, race for that day only.
8. Get your bike and gear scrutineered and attend rider's briefing. (See page 9 for details).
9. Go racing.

## **125 & 250cc**

Any junior rider who has already obtained an MA Licence but wishes to start competing on a 125cc or 250F & haven't already competed on that bike, must complete a 5 hours coaching course to be able race on that bike. This 5 hours coaching will count towards the five hours coaching you need to complete each year to renew your MA licence.

# MA Mini Licence - juniors 4 - Under 9 - Non Competition – 50cc



## **MA Mini Licence - Juniors 4 - Under 9 - Non Competition – 50cc**

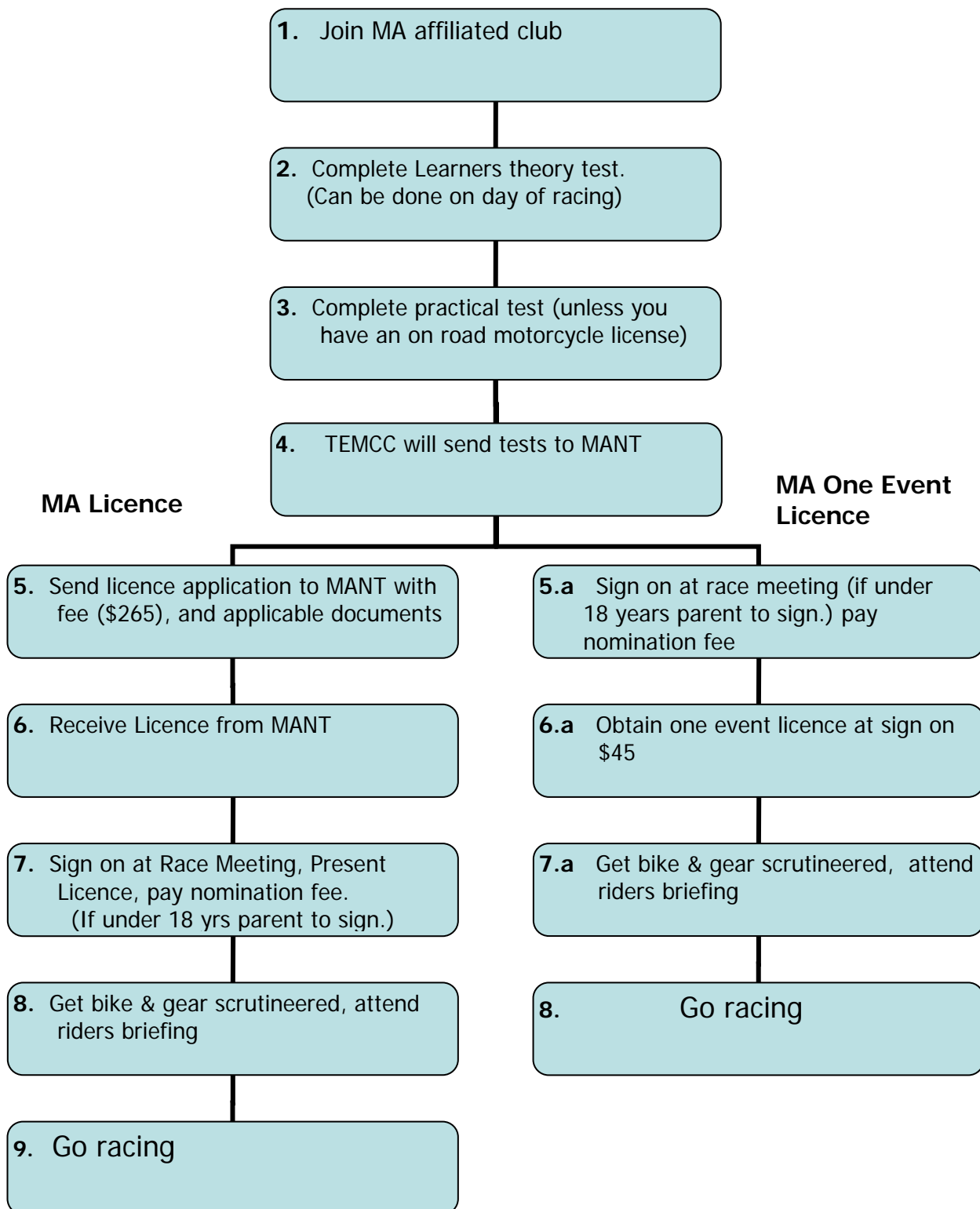
1. Join an MA Affiliated Club
2. Complete a Learner's Theory Test – 10 questions. This test can be done on the day. Please come early.
3. Complete a practical riding test – Basic test to ensure rider is competent. This test can be done on the day.
4. TEMCC will send test results to MANT.
5. Contact the Secretary of the TEMCC to receive a Licence application form. The completed Licence application form together with 2 passport photos, Licence fee \$95 (per year from date of issue) Copy of Birth Certificate & Proof of Ambulance Cover will need to be forwarded to Motorcycling Australia Northern Territory (MANT), See form for details. Allow two weeks for this to be processed.
6. You will receive your MA nipper licence and manual of motorcycle sport from MANT.
7. Sign on at Race Meeting (under 18years old parent must sign) and pay your nomination fee.
8. Get your bike and gear scrutineered and attend rider's briefing. (See page 9 for details).
9. Go Riding.

## **MA One Event Mini Licence - Juniors 4 - Under 9 - Non Competition – 50cc**

If you do not wish to obtain an official Licence but wish to ride at selected events, you may obtain a MA One Event mini Licence which entitles you to ride for that day only.

1. Join an MA Affiliated Club
2. Complete a Learner's Theory Test – 10 questions. This test can be done on the day. Please come early.
3. Complete a practical riding test – Basic test to ensure rider is competent. This test can be done on the day.
4. TEMCC will send test results to MANT. Your details will be kept on a membership/ licensing database. From then on you will then be eligible to purchase a One Event Licence.
- 5.a Sign on at race meeting, pay your nomination fee. ( under 18years old parent must sign)
- 6.a Obtain a One event Licence (\$45) at sign on. This entitles you to ride for that day only.
- 7.a Get your bike and gear scrutineered and attend rider's briefing. (See page 9 for details).
8. Go riding.

## MA License - Seniors



## **MA Licence - Seniors**

To compete at club events, all senior riders must obtain a Motorcycling Australia (MA) licence. If you haven't had a current MA licence in the last two years, to be eligible to apply you will need to pass the following:

1. Join an MA Affiliated Club
2. Complete a Learner's Theory Test – 25 questions. This test can be done on the day. Please come early.
3. Complete a practical riding test – Basic test to ensure rider is competent (unless you have an on road motorcycle licence) this test can be done on the day.
4. TEMCC will send test results to MANT.
5. Contact the Secretary of the TEMCC to receive a Licence application form. The completed Licence application form together with 2 passport photos, Licence fee \$265 (per year from date of issue) Copy of Birth Certificate or Drivers Licence & Proof of Ambulance Cover will need to be forwarded to Motorcycling Australia Northern Territory (MANT), See form for details. Allow two weeks for this to be processed.
6. You will receive your MA licence and manual of motorcycle sport from MANT.
7. Sign on at Race Meeting (if under 18years old parent must sign) and pay your nomination fee.
8. Get your bike and gear scrutineered and attend rider's briefing. (See page 9 for details).
9. Go Racing.

## **MA One Event Licence - Seniors**

If you do not wish to obtain an official Licence but wish to race at selected events, you may obtain a MA One Event Licence which entitles you to race for that day only.

1. Join an MA Affiliated Club
2. Complete a Learner's Theory Test – 25 questions. This test can be done on the day. Please come early.
3. Complete a practical riding test – Basic test to ensure rider is competent (unless you have an on road motorcycle licence) this test can be done on the day.
4. TEMCC will send test results to MANT. Your details will be kept on a membership/ licensing database. From then on you will then be eligible to purchase a One Event Licence.
- 5.a Sign on at race meeting, pay your nomination fee. (if under 18years old parent must sign)
- 6.a Obtain a One event Licence (\$45) at sign on. This entitles you to race for that day only.
- 7.a Get your bike and gear scrutineered and attend rider's briefing. (See page 9 for details).
8. Go racing.

## **Junior competition classes:**

4 - Under 9 years	50cc Auto - Non Competition
7 - Under 9 years	50cc Auto
7 - Under 13 years	65cc Solo
9 - Under 12 years	85cc Solo 2 stroke (standard wheel only)
12 - Under 16 years	85cc Solo 2 stroke & 150cc 4-stroke (standard or big wheels)
9 - Under 16 years	80cc up to 160cc Solo 4 stroke
13 - Under 16 years	100cc – 125cc 2 stroke
13 – Under 16 years	250cc 4 stroke

## **Senior competition classes:**

Pro Open  
Pro Lites  
B grade  
C grade/Clubmen

## **Sign-On**

All riders must sign-on during the specified time as in the Supplementary Regulations when attending the track for a club racing event. This is conducted in the sign-on/ scrutineering area located under the 'tower' at the start line.

Sign-on times are specified in the supplementary regulations and it is advisable to get there early (or at the earliest time specified in the Supplementary Regulations) as queues can get quite long and the process may take some time.

All nomination fees, One Event licence fees, learners permit fees (if applicable) must be paid on the day of racing.

**All junior riders must present their Motorcycling Australia Licence and Log book at Sign on.**

**All senior riders must present their Motorcycling Australia Licence at Sign on.**

## Scrutineering

All machines must be scrutineered to ensure they are compliant with MA standards/rules. Scrutineering of machines is conducted on day of racing at a nominated time, which is stated on the Supplementary Regulations (found on our Website).

All machines are to have a racing number attached to all 3 number plates. (All Junior riders to have race number on back of body Armour). If you are a new member and have not been allocated a number – tape may be used to make the number or letter for the first meeting (must be legible to scorers). Please do not use reflective type numbers as the lights distort the figures on night meetings and the scorers cannot read them.

## Riding Gear

All riders must have commercially made riding gear compliant with MA General Competition Rules. Boots, helmets and body armour (juniors only) are checked by the Scrutineer on the day of racing.

## Volunteers

**All riders must provide a volunteer to help out on the day of racing.** The club relies solely on volunteers, mainly members, their parents and their friends to prepare and co-ordinate racing events. A volunteer will be required to offer assistance as a:

- Flag Marshall (x25) – On-the-job training is conducted on the day of racing by the Clerk of Course.
- Finish Line Marshall (x2)
- Starter (x4)
- Scorers (x4)
- Canteen Duty (x6)
- Bar Duty (x2)

Generally volunteers are required 'on duty' for at least a half of the race meeting (At least 4 hours).

## Supplementary Regulations

Supplementary Regulations are MA compliant documents that give riders information about a club racing event. The information provided includes:

- Date the event is to be held
- Who is holding the event
- Where it is held – location of track
- What time racing, scrutineering and sign-on starts
- Classes available – Nomination Fees
- Description of the track
- Other rules and regulations

## MA Officials

MA Officials are generally members who have conducted MA courses or on-the-job induction in order to co-ordinate or help co-ordinate racing events.

Officials needed to conduct a racing event are:

- Clerk of Course
- MA Steward
- Race Secretary
- Flag Marshalls (at least 25 per race meeting)
- Starters
- Scorers
- Finish Line Marshall
- Scrutineers

The Clerk of Course & MA Steward requires specialised training at a MA sanctioned course. These courses are held periodically throughout the year. All other official positions are on-the-job induction only.

An Official Licence must be obtained, once a member has completed a MA course or received on-the-job induction, from MA for \$15 (TEMCC will reimburse) and is valid for 4 years. Completion of a Licence Application form (available from Race Secretary or Club Secretary) is required. And you will need to supply two passport photos.

***It is encouraged that members officiate in one of the listed capacities as it takes a lot of volunteers to co-ordinate a race meeting.***

## Meetings

Club meetings are held every second Thursday of every month at Terry Mills office at Oasis Shopping Centre (entrance via back door) commencing at 7.00 pm sharp. It is beneficial that all members attend as this is where decisions are made regarding the administration of the club, including track and event management, fees and charges for upcoming series, classes in upcoming series, etc.

## Disclaimer

***While every attempt has been made to provide you with the correct information the Top End Moto Cross Club Inc takes no responsibility if the information provided is incorrect.***

***Please refer to the 2009 Manual of Motorcycle Sport (Motorcycling Australia) for further information regarding Motorcycling Australia Licences or telephone Motorcycling Australia Northern Territory 0417 842 480 for further information.***

# Fees and Charges

(Valid for 2009)

\*\* Subject to change

## **Nomination Fees** (per class)

(50cc through to Seniors)

\* TEMCC official racing events that are  
\* part of a 'Series'

**TBA**  
**Refer supplementary**  
**regulations**

**Each additional race** (if wanting to  
compete in more than one class)

\* TEMCC official racing events that are  
\* part of a 'Series'

**TBA**  
**Refer supplementary**  
**regulations**

## **One Event Licence**

(TEMCC official racing event that is part of  
a Series)

**\$45-00**

## **One Event Recreational Licence**

(for 'Fun Day' riding events only)

**\$20-00**

## **TEMCC Single Membership**

(over 18years only)

**\$90-00**

## **TEMCC Family Membership**

**\$110-00**

## **MA mini Licence – 50cc – 4-under 9 years**

(non competition only)

**\$95-00**

## **MA Junior Licence (under 16 years)**

**\$240-00**

## **MA Senior Licence**

**\$265-00**

## **MA Official Licence**

**\$15-00**